



1. Description

The K2000C lubricator can use with SM-A control and also can equip solenoid valve, decompress valve. K2000C not only can continue work but also can work with constant time or constant lubricant.

Then spray condition can be homogeneous humidity, accurate.

(1).use for cooling

It can improve work condition can prolong equipment life when lubricant is water or oil. One spray system can have 8 lube points.

Important Notes

Fill reservoir with Sterling Gun Drills lubricant (DF-81, DF-86) or equivalent high "EP" oil base water soluble coolant.

DO NOT USE SYNTHETICS!

(2).use for lubricating

Nozzle B136 and meter unite can be used when K2000C is used to cool gear, bearing and chain.

(3).use for spray lubricant

K2000C can reduce dust when it be used in leather, wooden and spin industry.



2. Work Theory

Controller control the solenoid valve close or open, then can control the air line. So the stroke movement periodic. Stroke move down and supply oil when pressure air be in cylinder. Stroke move up under spring force and suck oil into cylinder when air line closed. pressure oil and pressure air mix at nozzle. Then spray oil brume

3. Specifications

Air input pressure :0.3Mpa—0.85Mpa(2.9kg/cm²—8.4kg/cm²)

Oil pressure: air pressur=4:1

Voltage: 110VAC/220VAC~60Hz/50Hz

Solenoid valve power:6.8W/6.5W

The ratio of lubricant (or coolant) and water: 10:1

4. Electrical Source Connection

Put down the plug first. Then open the plug which has a groove. Please connect two wire in the two symmetrical groove. Put on the plug at last.

5. Air and Oil Pipeline

BIJUR has special double pipe for K2000C.Connect the double pipe two end with the pump and nozzle.

6. How To Operate

(1). There is a SM-A controller in K2000C.Then work time , work cycle and stop time can be set in advance.

(2). The delivery of K2000C can be adjust from 2ml to 10ml one cycle. adjust bolt is adjusted (Fig 1).The figure on the adjust bolt is the oil delivery. If you need the delivery is 4mm/cyclic,you turn the adjust bolt and Oil delivery will be change when the let its read 4.

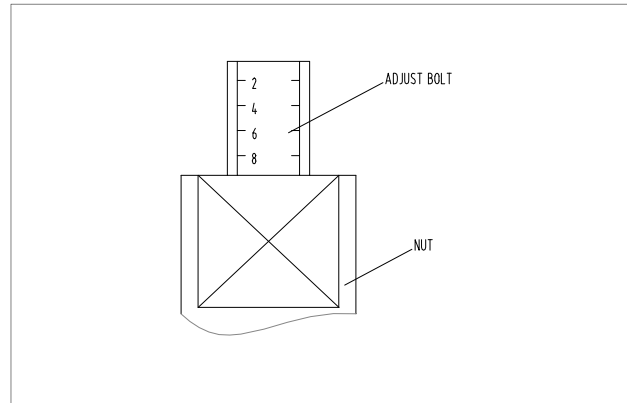


Fig 1

7. How To Use Controller SM-AC

General

SM-AC is a multi-purpose controller for different lubricating systems, such as **SLR** system, **PDI** system, and **PRG** system.

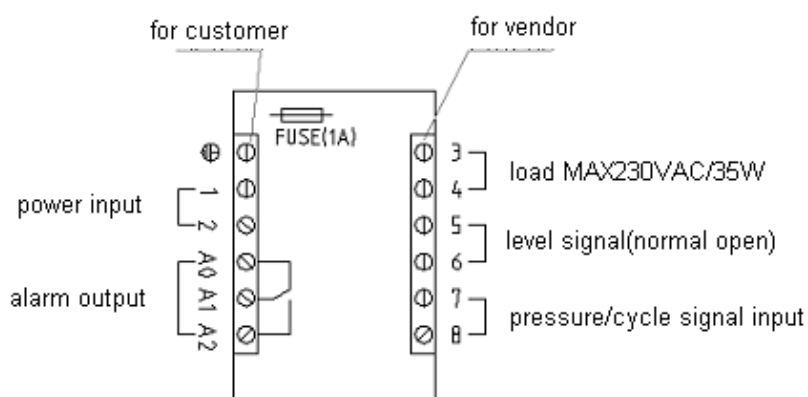
This programmed controller is compact and reliable. It can meet almost all kinds of rough industrial condition due to its high protective grade and anti-vibration.

Real time fault alarm is an outstanding feature of this excellent controller as well as its data memory function at power off occasion.

Specification

- Power Supply : 220VAC,50HZ
- Loading Power: 60 W
- Fault Relay Contacts: 220V, 30W
- Ambient Temp. : -20 °C ~ 55 °C
- Fuse: ϕ 5x20, 1A

Layout



Panel

There are one 4-digit display and 3 LED lights on the panel. The digital screen can display operation mode and program. 3 LED lights indicate respectively: power supply (Green), pump running (Red) and low level alarm (Yellow).

Key board

S: Function setting and program review

R: Data store, reset and run

↶: Remove cursor

↑: Data setting

8. TROUBLESHOOTING CHART

ITEM	SYMPTOM	POSSIBLE CAUSE	REMEDY
1	No oil brume	Air pressure is lower than 0.2 Mpa	Enhance air pressure
		Taphole is blocked	Make taphole be salable
		The oil is too dirty then MU be blocked	Change a MU Use clear oil
2	There are air bubble in the oil brume	relieved valve be blocked if the oil is too dirty	Use clear oil and press key "run" to make sure
		Refill reservoir plate be fretted	Refill reservoir with clean Bijur approved oil refill reservoir is normal

TECHNICAL DATA SHEET
K2000C LUBRICATOR

3	Pump do not work	electrical source and air source connect is not right	Connect them per our request
		Controller setting is worn	Set controller correctly
4	Pipeline leak	Nut is not tighten	Tighten the nut
		Sleeve is spoil	Change a new sleeve
5	Air line open all the time	Select the improper pump	Select suit pump
6	Oil brume is too much	Air pressure is too high	Reduce the air pressure
		There is not reduce value in the air line	Select a suit reduce value
		Pin value in the nozzle back open too big	Adjust the pin value ,reduce the nozzle delivery